

Self Injection Quick Guide

Support for people
using COPAXONE®
(glatiramer acetate)



teva



CARE XONE
support

Before using COPAXONE, please review the full Instructions for Use and Consumer Medicines Information inside your COPAXONE box.

Administration of COPAXONE (glatiramer acetate) with the

COPAXONE PEN[®] or **Pre-filled syringe**

with CSYNC™ Autoinjector

STEP 1 Preparation



Store your COPAXONE in the refrigerator

Remove one COPAXONE PEN or Pre-filled syringe from the refrigerator



Wait for at least 20 minutes to let COPAXONE warm up to room temperature (15°C to 25°C)

Gather supplies for the injection:

1 COPAXONE PEN or Pre-filled syringe

1 alcohol swab per injection

1 gauze pad or cotton ball per injection



1 sharps disposal or puncture-resistant container



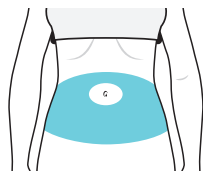
- Check the pen or syringe for damage
- Check the liquid is clear, with no particles
- Air bubbles are normal
- Wash hands



STEP 2 Choosing an injection site

- 7 possible sites
- Use a different site for each injection
- Clean the site with an alcohol swab

FRONT



Area 1: Abdomen
avoid 5 cm around the belly button



Areas 2 & 3: Thighs
above the knees

BACK

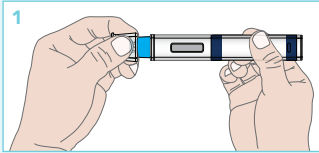


Areas 4,5,6 & 7: Back of the upper arms and upper hips below the waist

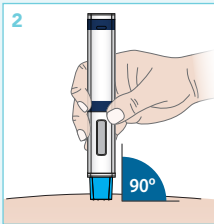
STEP 3 Administering the injection

COPAXONE PEN

1. Remove the cap from the COPAXONE PEN

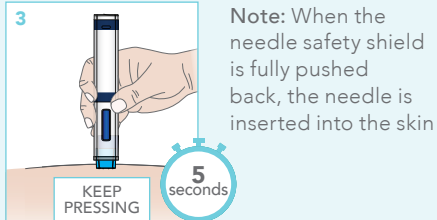
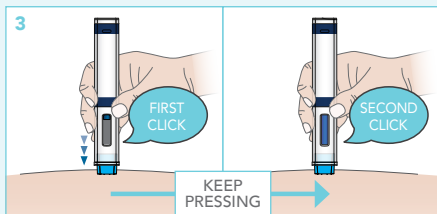


2. Place the pen on the skin at a 90-degree angle



3. Press down and hold for about 15 seconds until the injection is complete

- The first “click” signals the start of the injection, and the blue plunger starts to move
- Keep pressing down until a second “click” is heard 5–10 seconds after the first
- Wait another 5 seconds to ensure all the medicine is injected

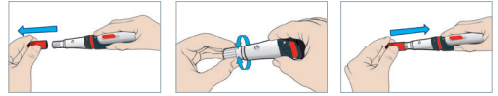


Note: When the needle safety shield is fully pushed back, the needle is inserted into the skin

- Check that the blue plunger has filled the viewing window and remove the pen from the skin

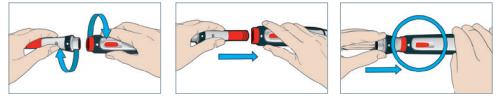
Using the CSYNC™ Autoinjector with Pre-filled Syringe

Set the depth for injection



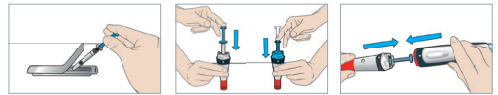
1. Remove the red needle cap
2. Adjust injection depth
3. Replace the red needle cap

Prime the CSYNC™ Autoinjector



4. Push back plunger; unscrew syringe holder from the handle
5. Turn the syringe holder so the red needle cap remover faces the open end of the handle. Push the red needle cap remover into the blue handle. The indicator window will change from red to white

Insert Pre-filled syringe



6. Take the syringe out of the blister and carefully insert it into the syringe holder by pressing on the plunger rod. Insert the syringe holder into the handle and screw back together

Inject the dose



7. Remove red cap, place the CSYNC™ Autoinjector on the skin and press down until white arrows meet and red band is hidden. Push blue button. The first “click” signals the start of the injection. Hold the CSYNC™ Autoinjector on the injection site until you hear a second “click” and indicator window turns red, approximately 10 seconds

STEP 4 Disposal

Immediately dispose of the used pen or syringe into a sharps container or puncture-resistant container



STEP 5 Injection site aftercare

Press a dry cotton ball on the injection site for a few seconds, but do not massage it

If you have any questions about COPAXONE or injecting, please speak with your doctor.

CARE XONE patient support program

CARE XONE is a patient support service staffed by dedicated consultants. They offer telephone and email assistance with COPAXONE therapy and also provide educational material and a patient resource kit to help you get the most out of your COPAXONE therapy.

The consultants can be contacted Monday to Friday, 9 am to 5 pm (AEST) on 1800 502 802 or email carexone@mysupportteam.net.au

The information provided by CARE XONE does not replace information or advice provided by your medical practitioner or MS nurse.



**Scan the QR code to
access CARE XONE
patient support program**

