

# How to use your AJOVY® (fremanezumab) Autoinjector or Pre-filled syringe

Please keep your AJOVY in the fridge after you receive it

## Step 1 Take AJOVY out of the fridge to reach room temperature

- Wait for 30 minutes to let AJOVY reach room temperature to reduce discomfort during injection.
- Gather supplies for your injection:
  - 1 or 3 AJOVY injections, depending on your prescribed dose (monthly or quarterly)
  - 1 alcohol swab per injection
  - 1 gauze pad or cotton ball per injection
  - 1 sharps disposal or puncture-resistant container.



## Step 2 Inspect your AJOVY Autoinjector or Pre-filled syringe



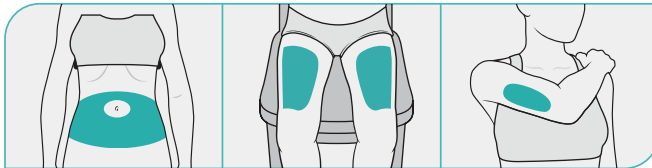
AUTOINJECTOR



PRE-FILLED SYRINGE

- Check the name and that your medication is not out of date.
- Check that the liquid looks clear and is colourless to slightly yellow.
- You may see small air bubbles. This is normal.

## Step 3 Choose your injection area and clean with alcohol swab

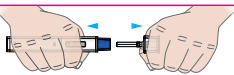


**Abdomen:**  
about 5 cm around  
the belly button

**Thighs:** about 5 cm  
above the knee and  
5 cm below the groin

**Back of upper arms**

## Step 4 Remove the protective cap



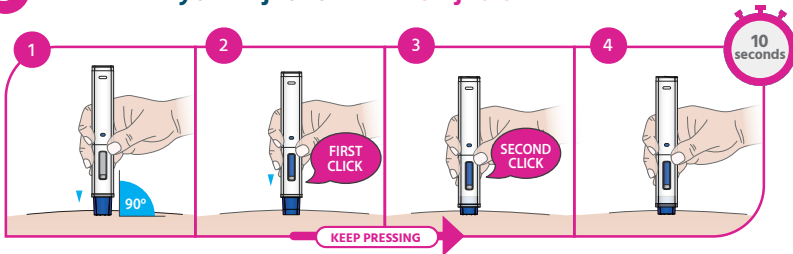
AUTOINJECTOR



PRE-FILLED SYRINGE

- Pick up your Autoinjector or Pre-filled syringe with one hand and pull the protective cap straight off with the other, elbows out. You may encounter some resistance, but this is normal. Do not twist nor attempt to replace the cap at any time. Once the cap has been removed, your device is ready to use.
- Do not put the protective cap back on.

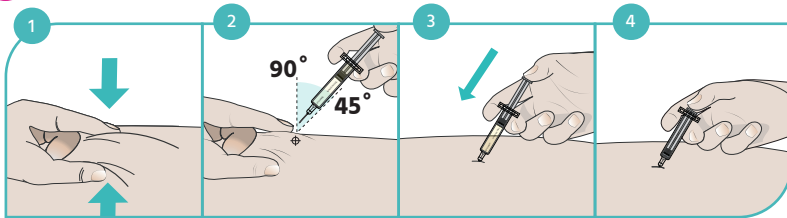
## Step 5 Administer your injection – Autoinjector



- 1 Place the Autoinjector at a 90-degree angle against your cleaned skin at the injection site. Press down and continue pressing down for about 30 seconds until all the steps shown are complete.
- 2 You will hear the first “click”. This signals the start of the injection, and the blue plunger starts to move. Keep the device pressed down against your skin.
- 3 You will hear a second “click” about 15 seconds after the first “click”. The plunger will be moving to the bottom of the viewing window as the medicine is being injected.
- 4 Wait another 10 seconds to make sure all of the medicine is injected.

**For questions about Ajovy or injecting, please talk to your doctor.**

## Step 5 Administer your injection – Pre-filled syringe



- 1 Gently pinch at least 2.5 cm of the skin.
- 2 Insert the needle into the pinched skin at an angle of 45–90 degrees.
- 3 Slowly push the plunger in.
- 4 Push the plunger all the way down as far as it will go to inject all the medicine.

## Step 6 Remove the Autoinjector or Pre-filled syringe needle from your skin

- Apply pressure at injection site with cotton ball or gauze for a few seconds.

## Step 7 Dispose of the Autoinjector or Pre-filled syringe

- Dispose of Ajovy into a sharps container. Do NOT recap Ajovy.
- Ask your doctor, pharmacist or nurse how to throw away the container when full.



If your dose is 675 mg, repeat the steps with the second and third injection to inject the full dose. Avoid injecting in exactly the same place each time.



Autoinjector



Pre-filled syringe

For more information on how to inject, including video guidance, use the QR code here or go to [www.migrainehq.com.au](http://www.migrainehq.com.au) and follow the instructions to log in.